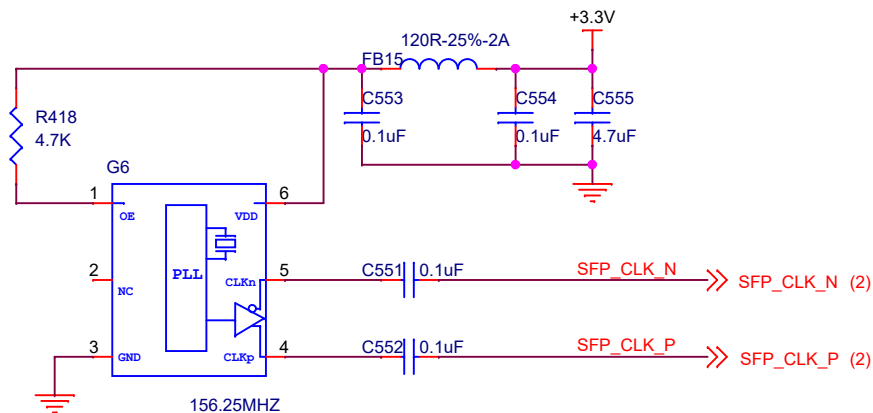


CLOCK



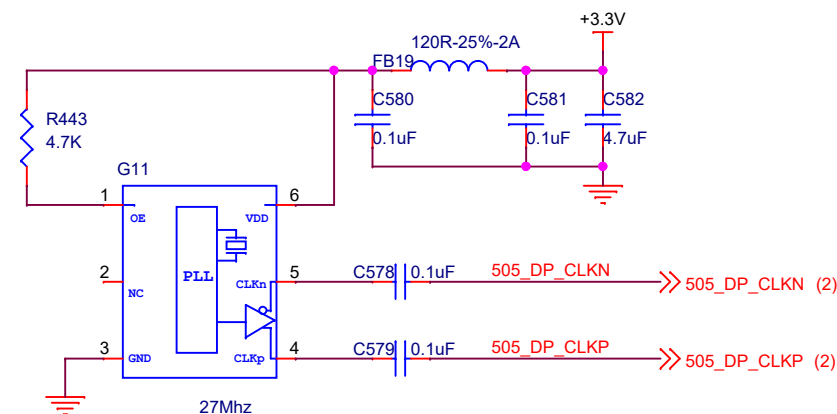
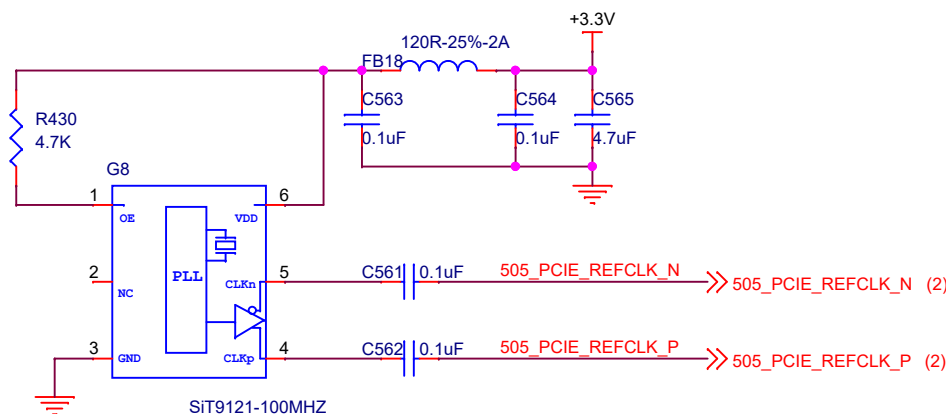
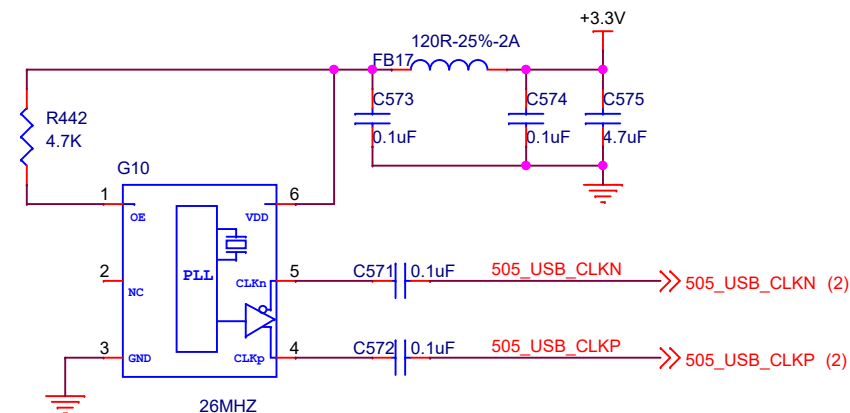
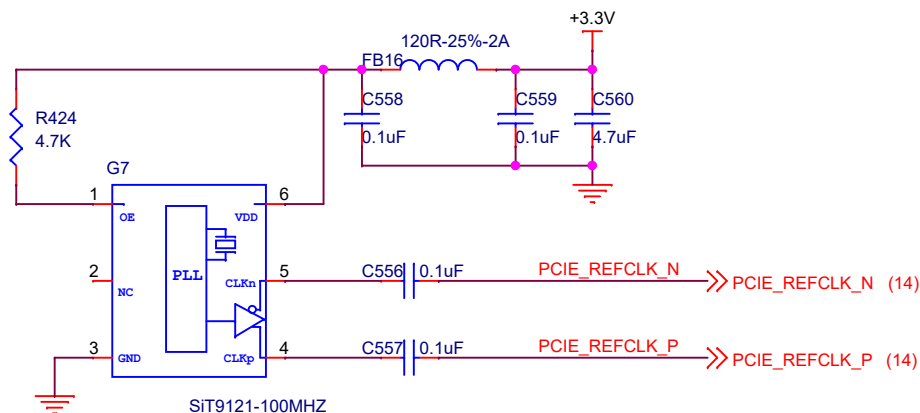
M.2-PCIE CLOCK=100MHZ

PCIE3.0 CLOCK=100MHZ

SFP CLOCK=156.25MHZ

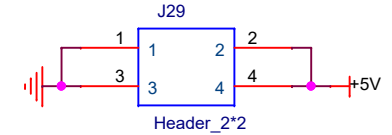
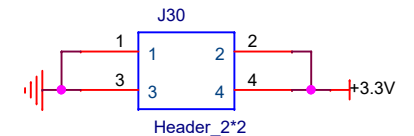
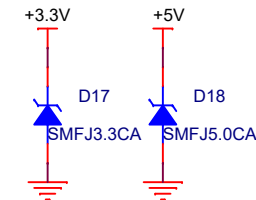
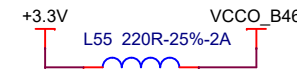
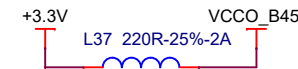
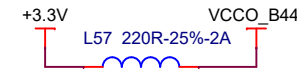
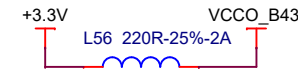
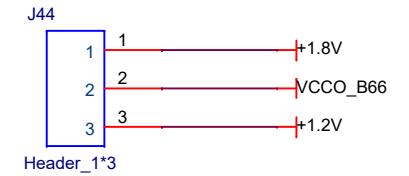
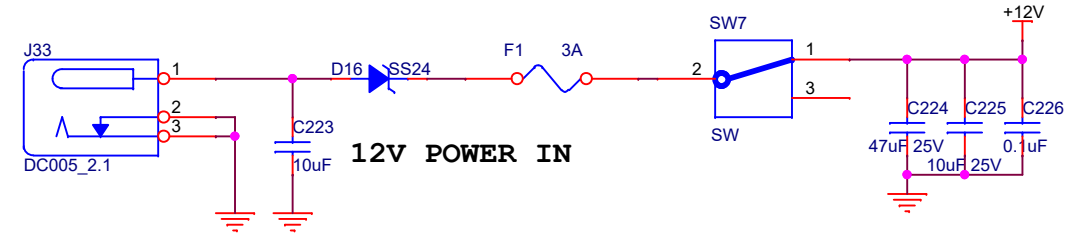
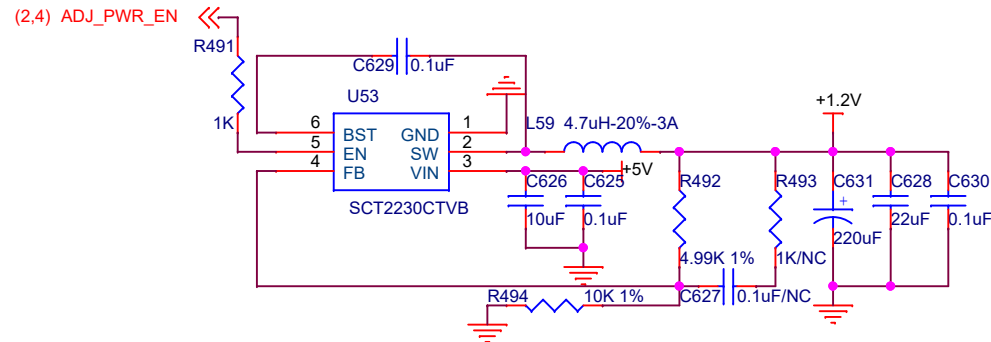
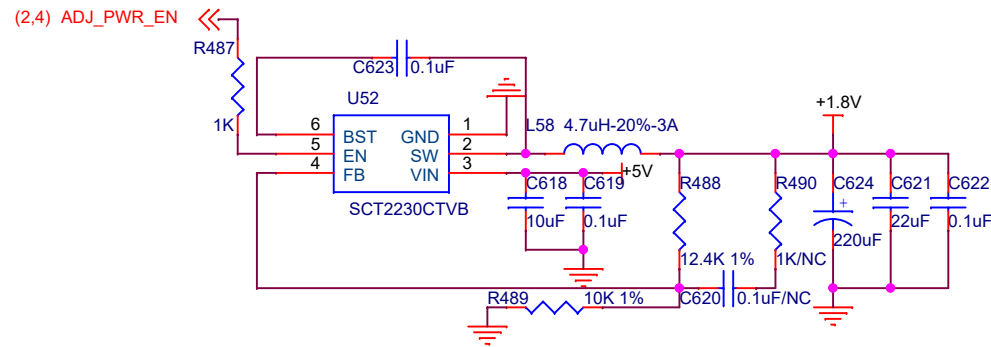
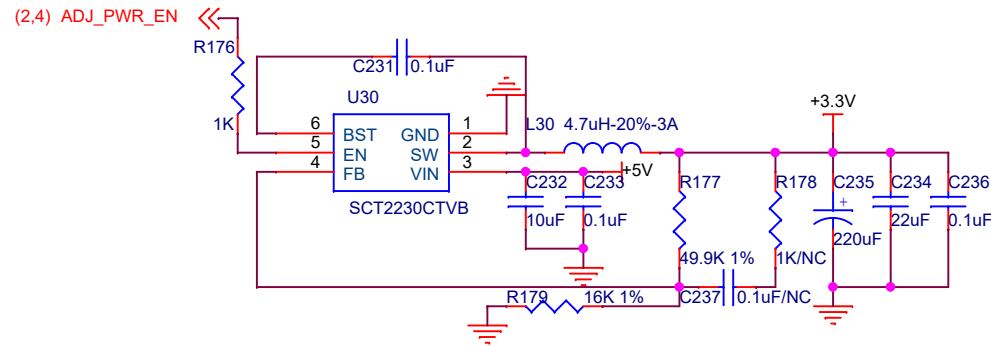
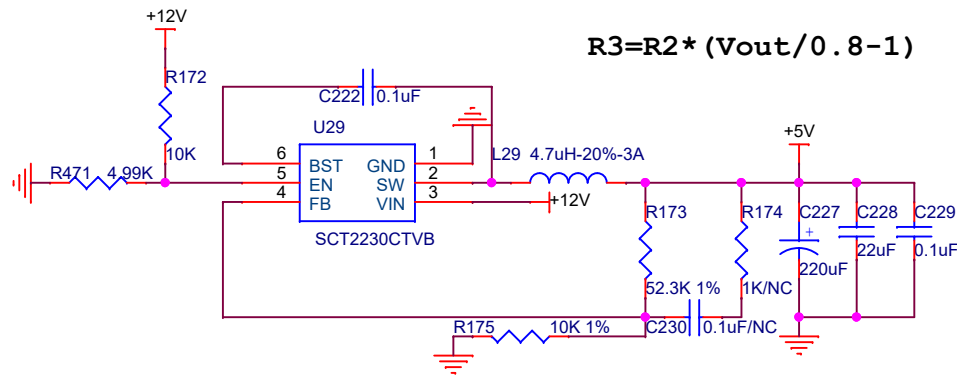
DP CLOCK=27MHZ

USB CLOCK=26MHZ



Power Supply

$$R3=R2*(V_{out}/0.8-1)$$

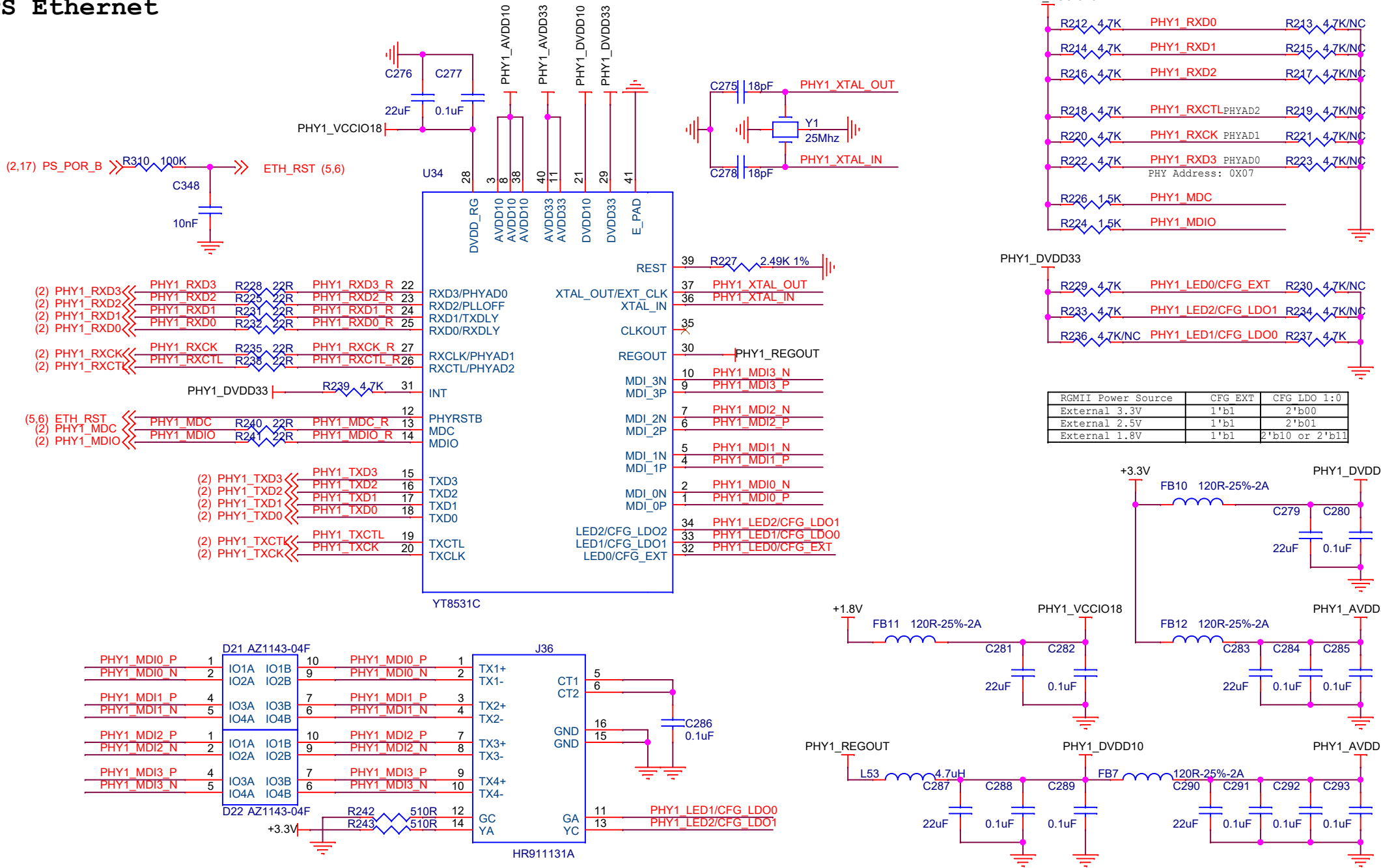


| | |
|----------|---------------------------------|
| Title: | BTB MPSOC P5 BASE 1V0 USER 0918 |
| Author: | ALIENTEK |
| Version: | V1.4 |
| Size: | A4 |
| Date: | Wednesday, September 18, 2024 |
| File: | 04 POWER |
| Sheet: | 4 of 21 |



正点原子

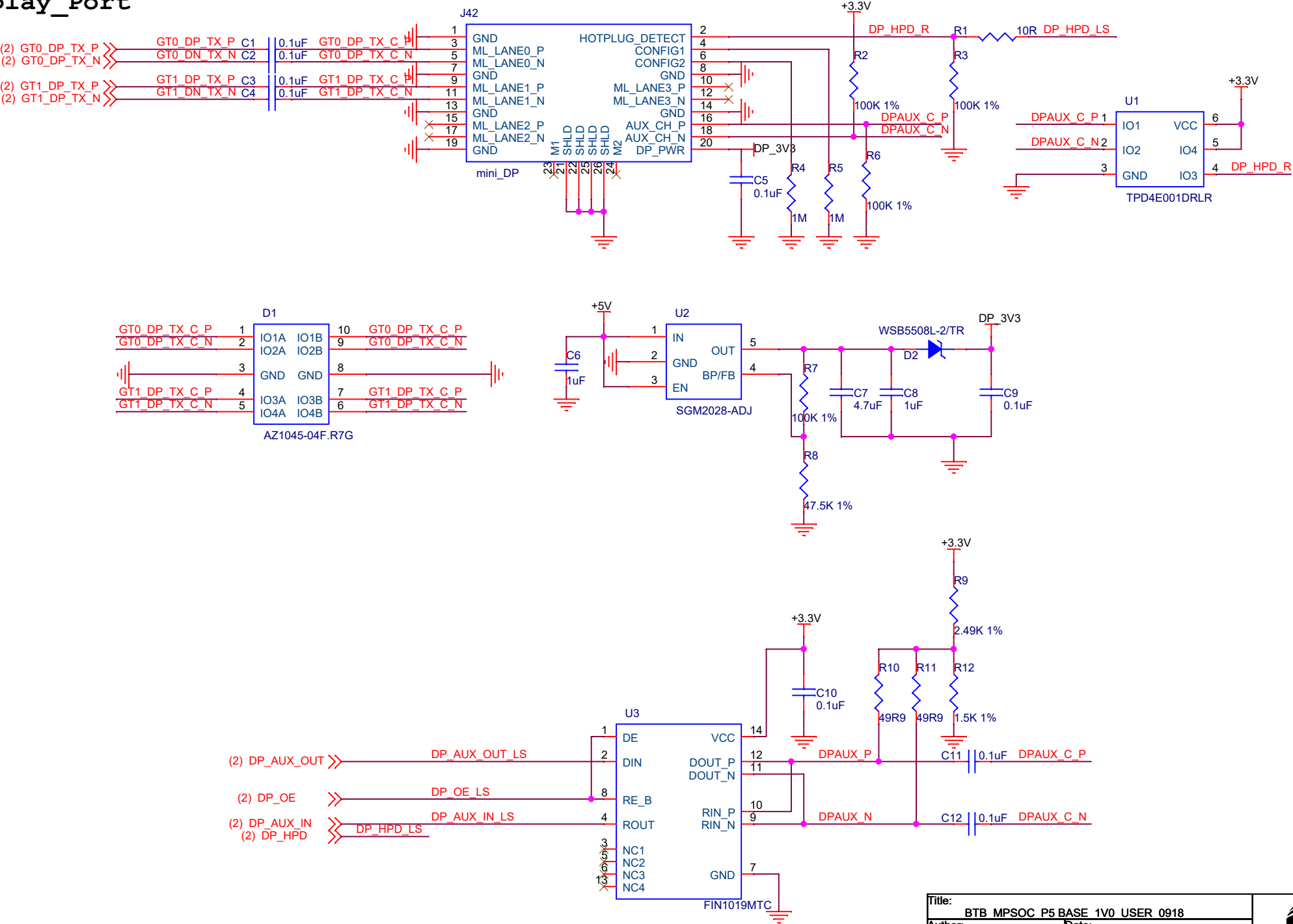
PS Ethernet



| RGMI Power Source | CFG EXT | CFG LDO 1:0 |
|-------------------|---------|----------------|
| External 3.3V | 1'b1 | 2'b00 |
| External 2.5V | 1'b1 | 2'b01 |
| External 1.8V | 1'b1 | 2'b10 or 2'b11 |



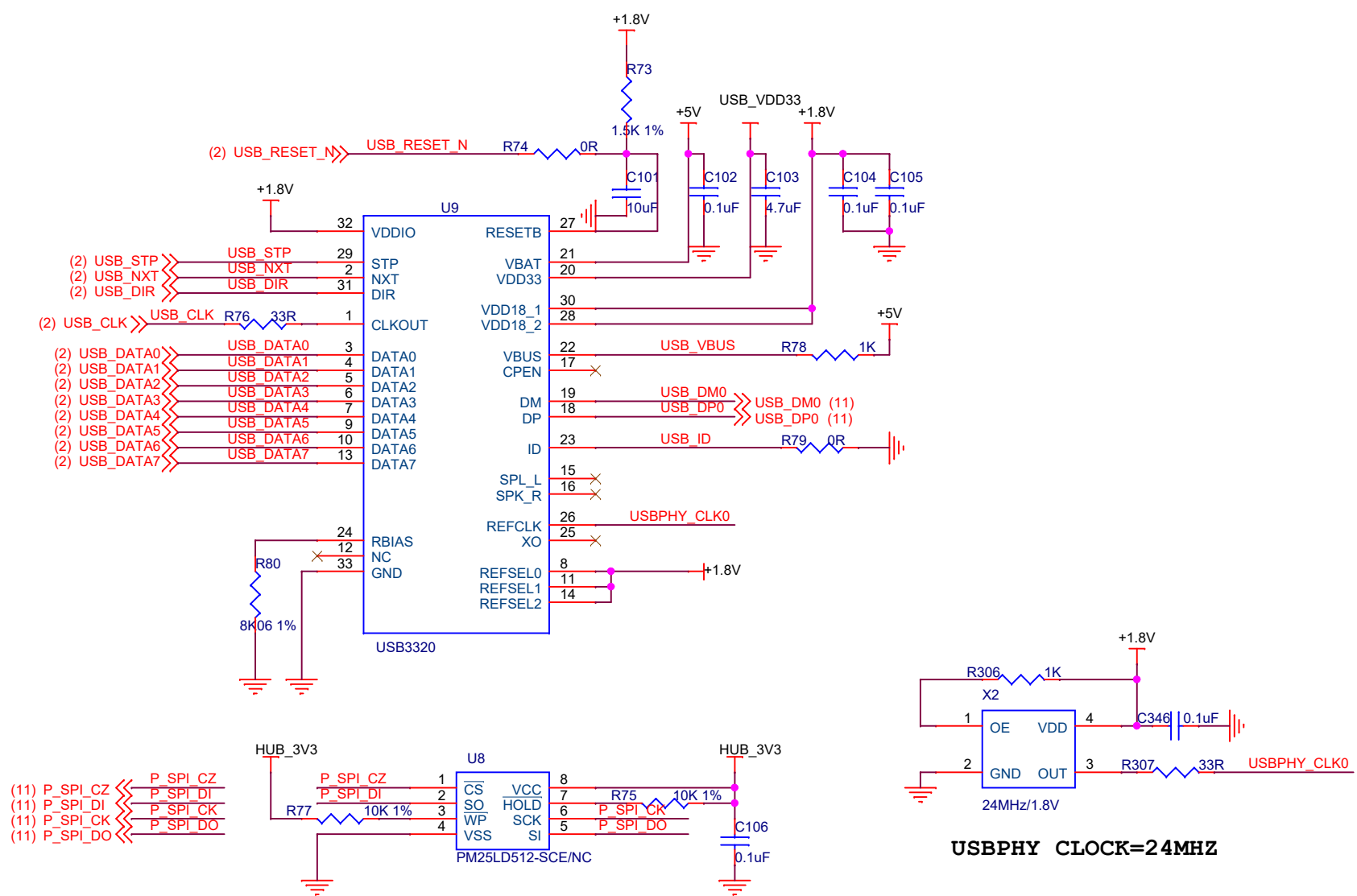
Display_Port



| | |
|--|-------------------------------------|
| Title: BTB MPSOC P5 BASE 1V0 USER 0918 | |
| Author: ALIENTEK | Date: Wednesday, September 18, 2024 |
| Version: V1.4 | File: 07 mini Display Port |
| Size: A4 | Sheet 7 of 21 |

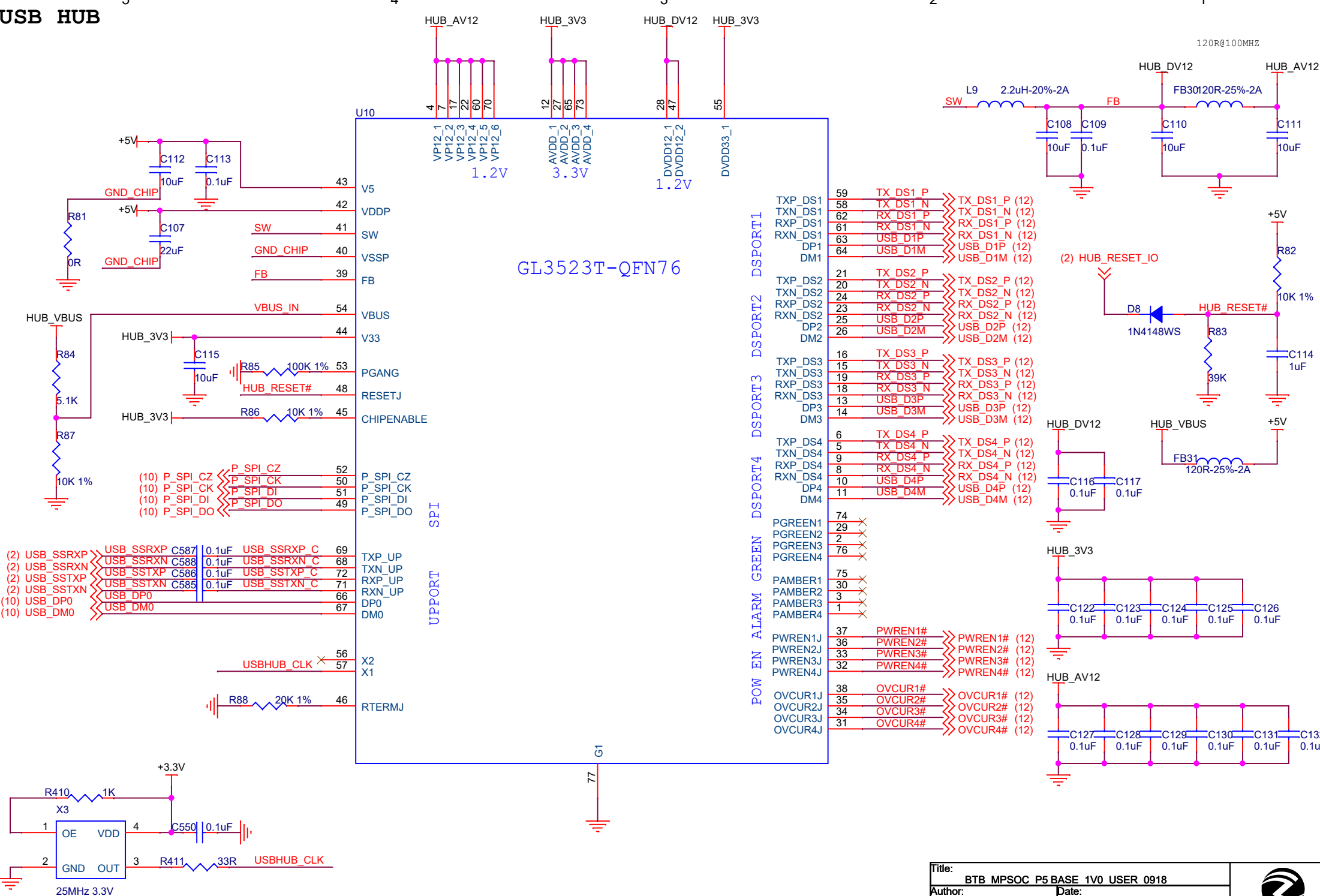


USB Slave

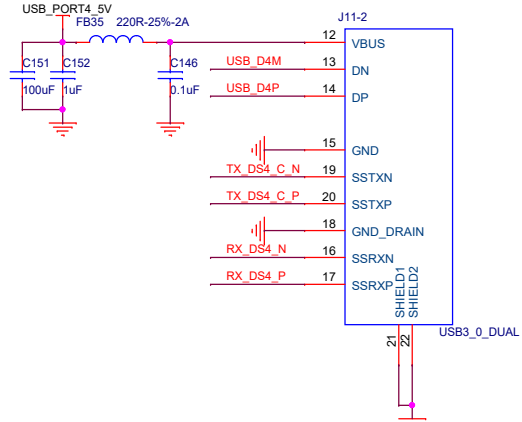
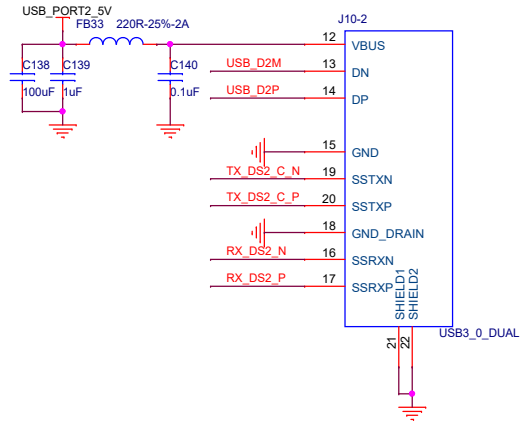
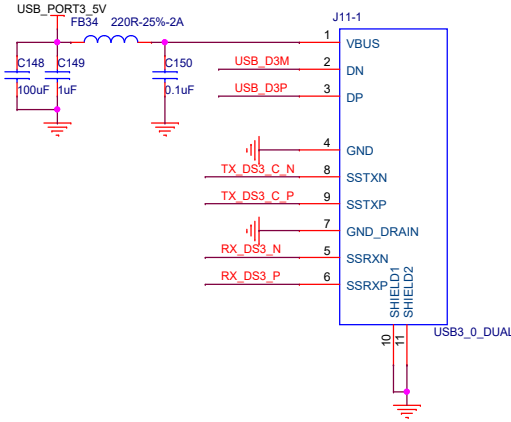
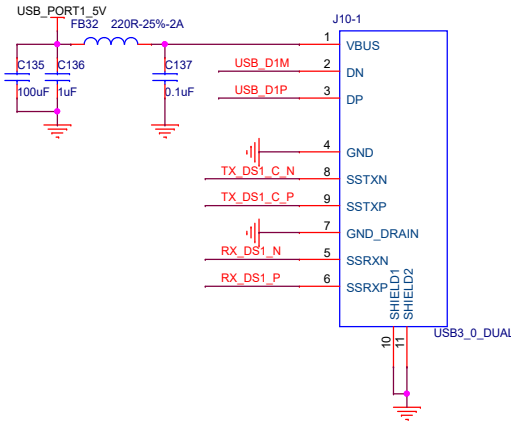
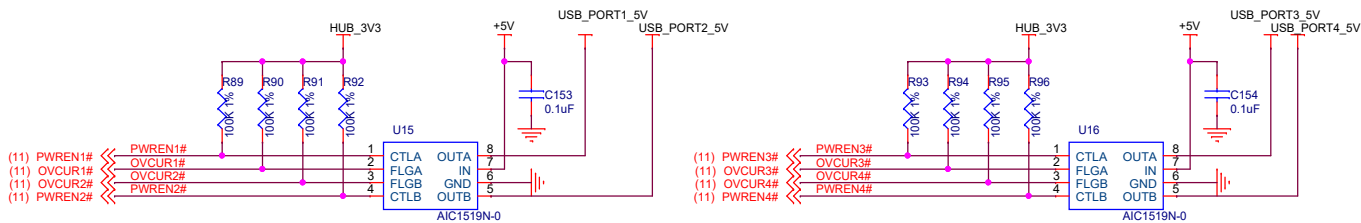
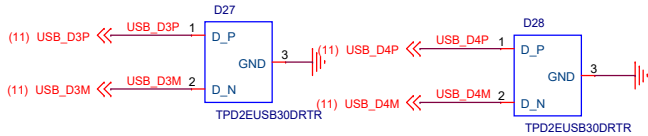
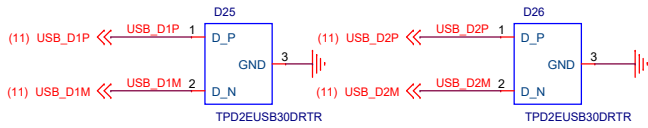
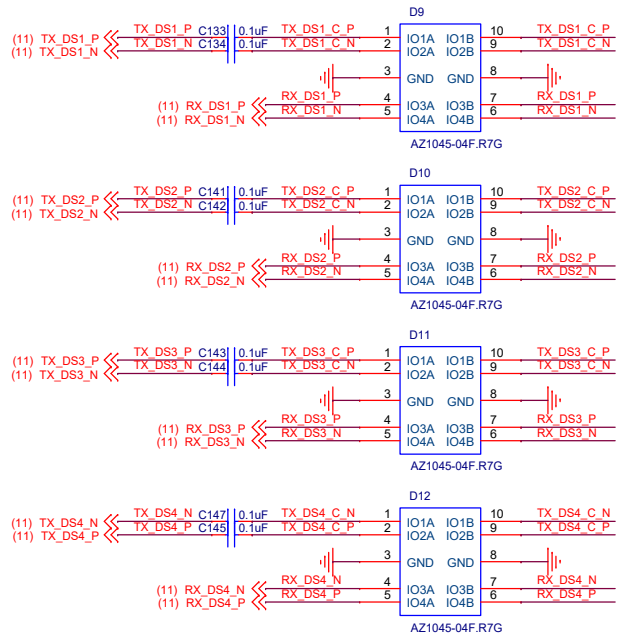


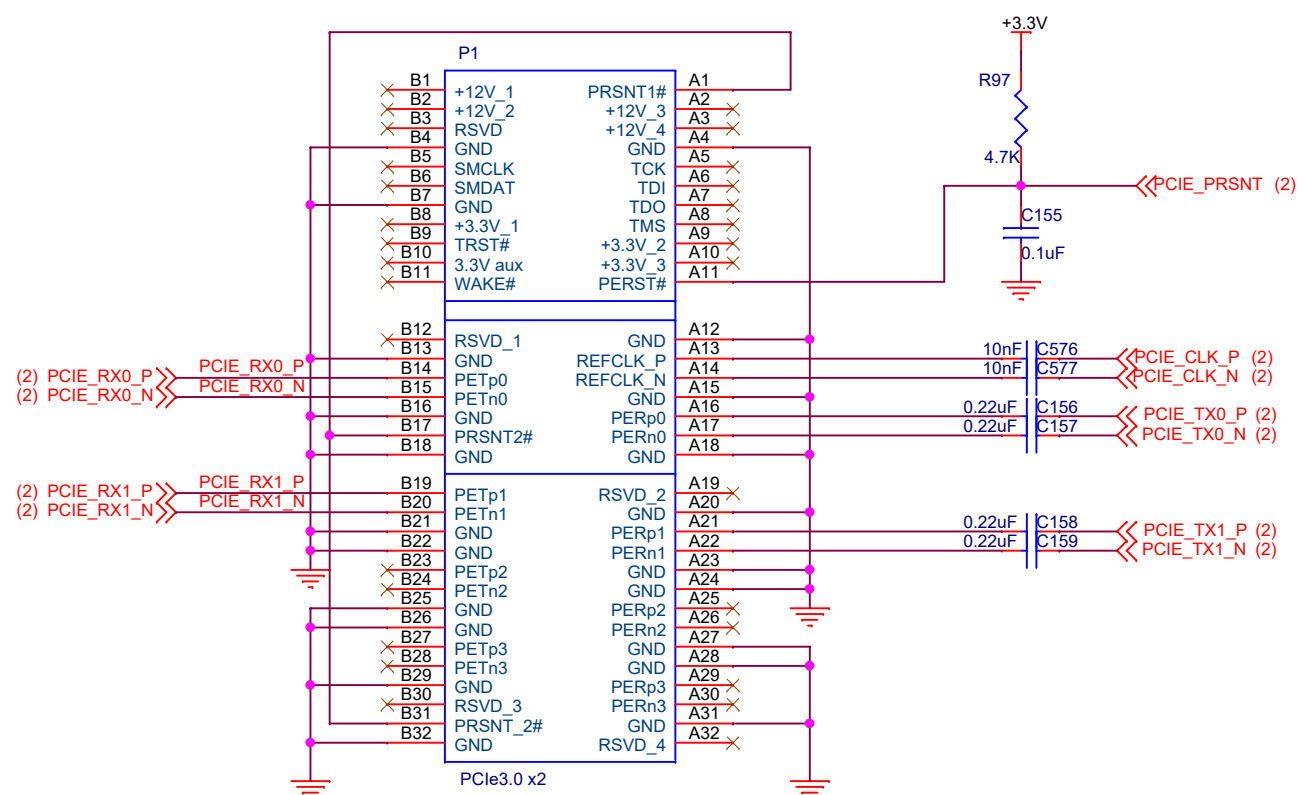
USBPHY CLOCK=24MHZ

USB HUB

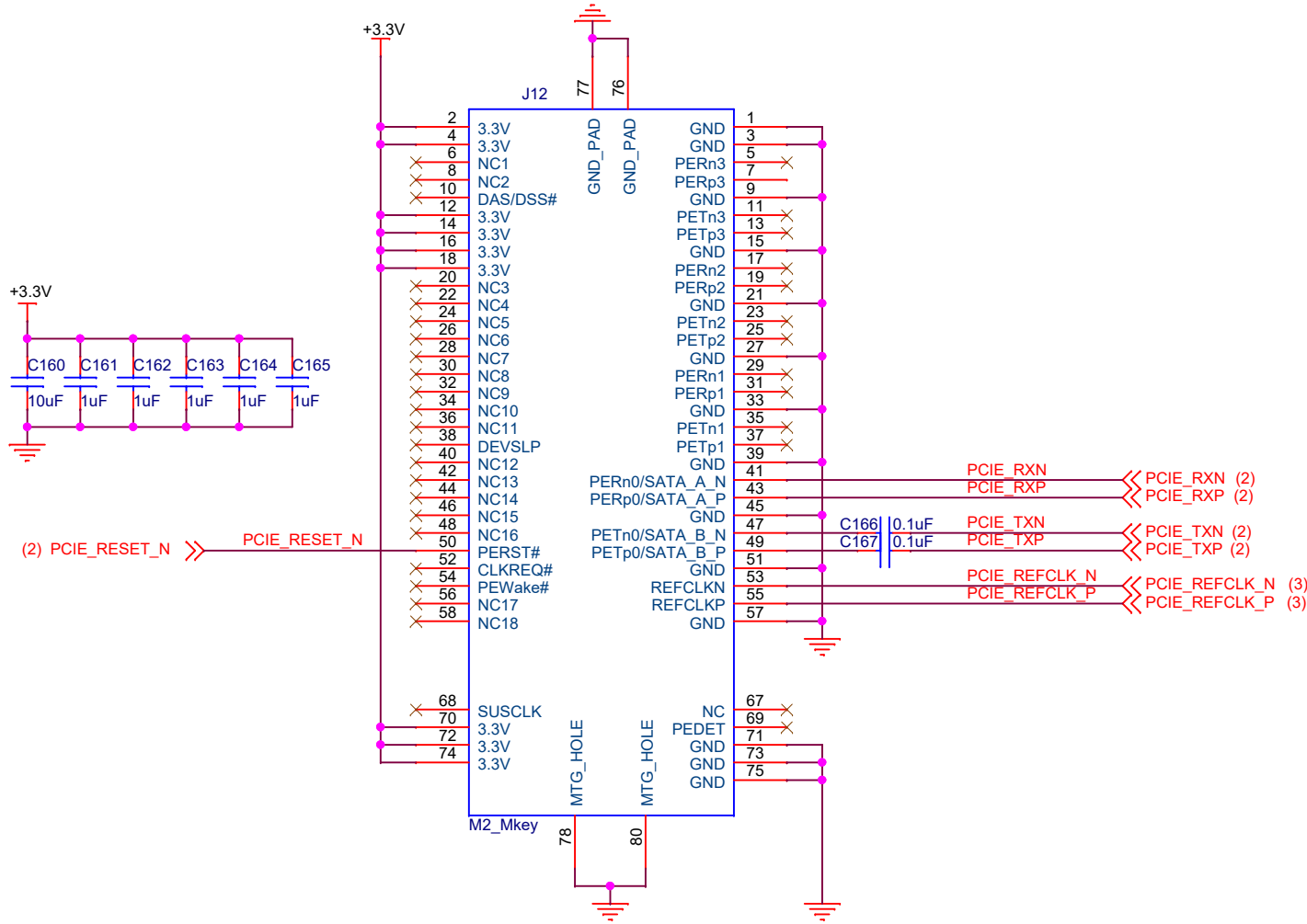


USB DUAL

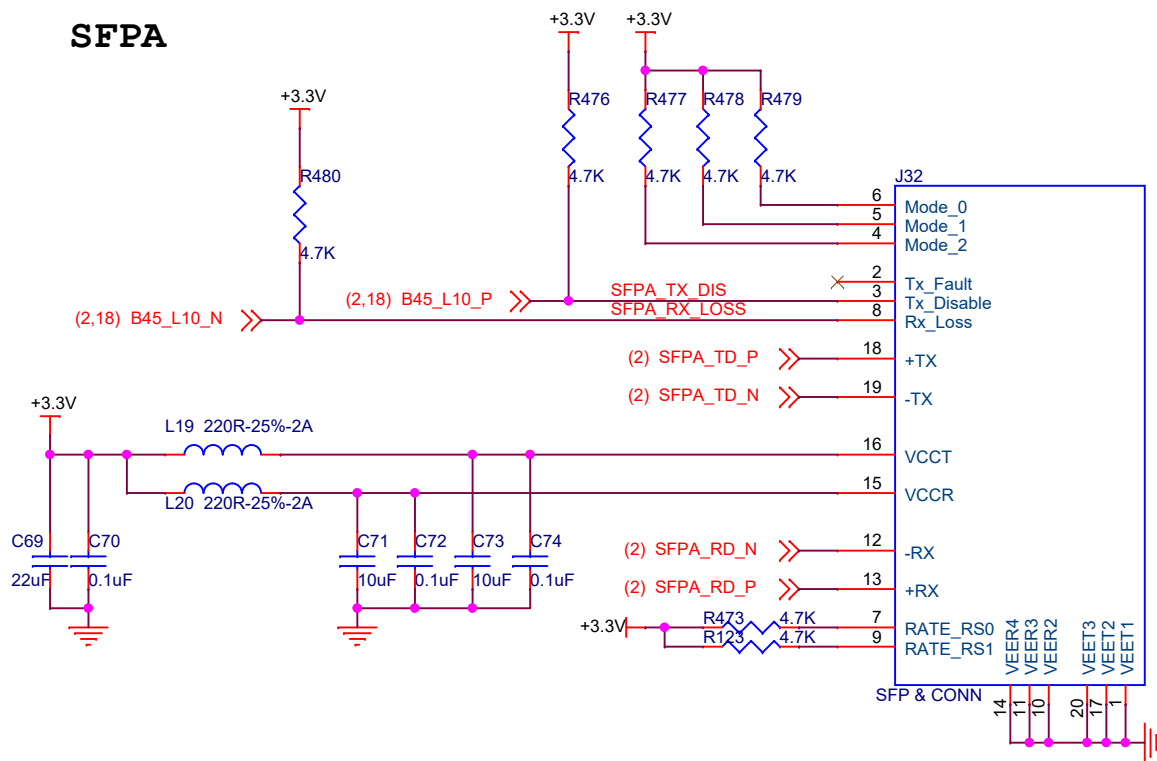




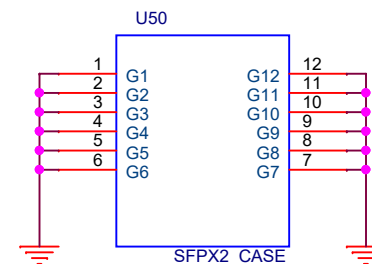
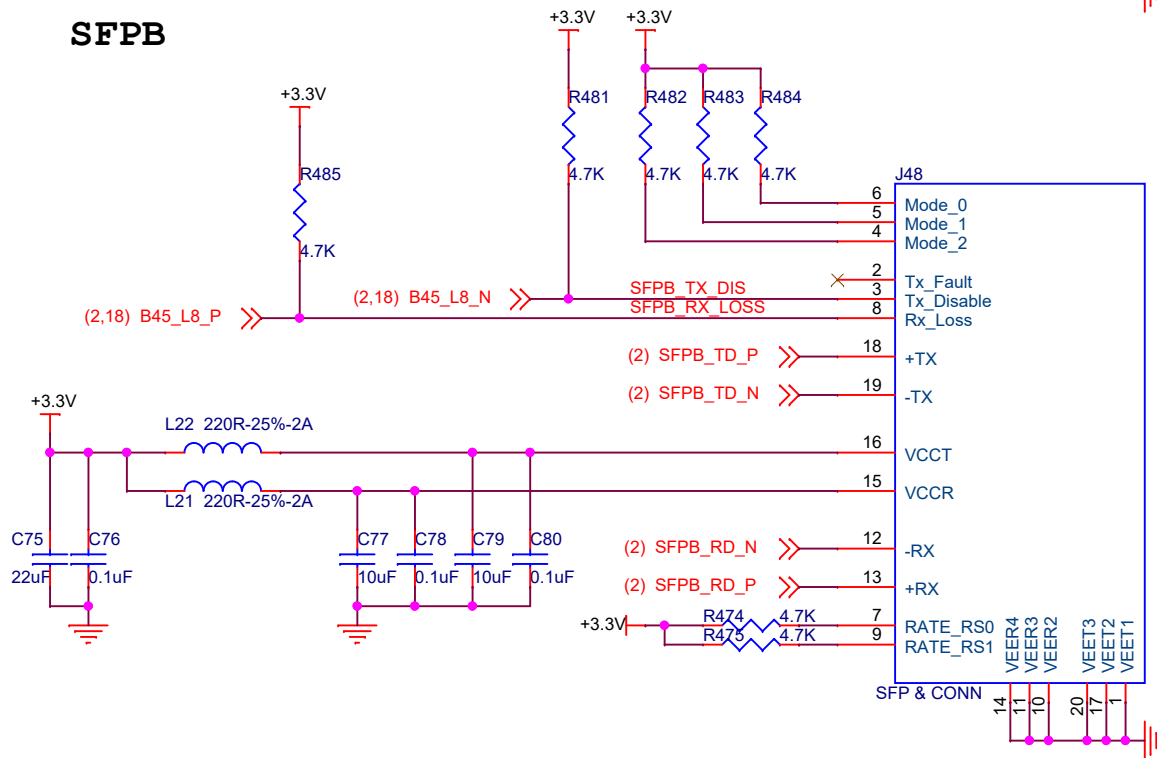
M.2-PCIE



SFPA



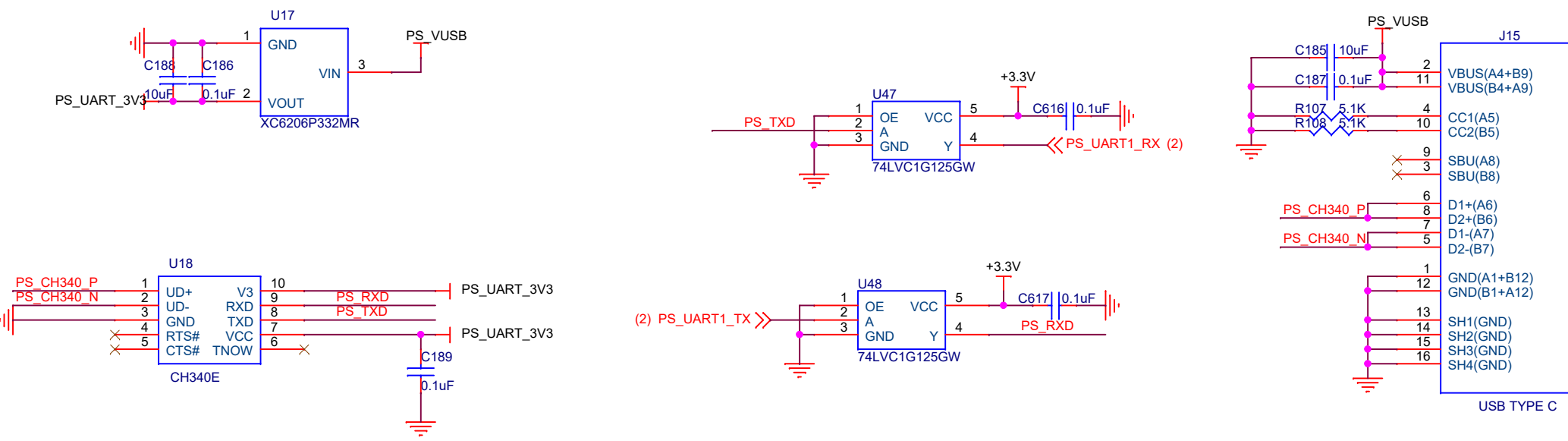
SFPB



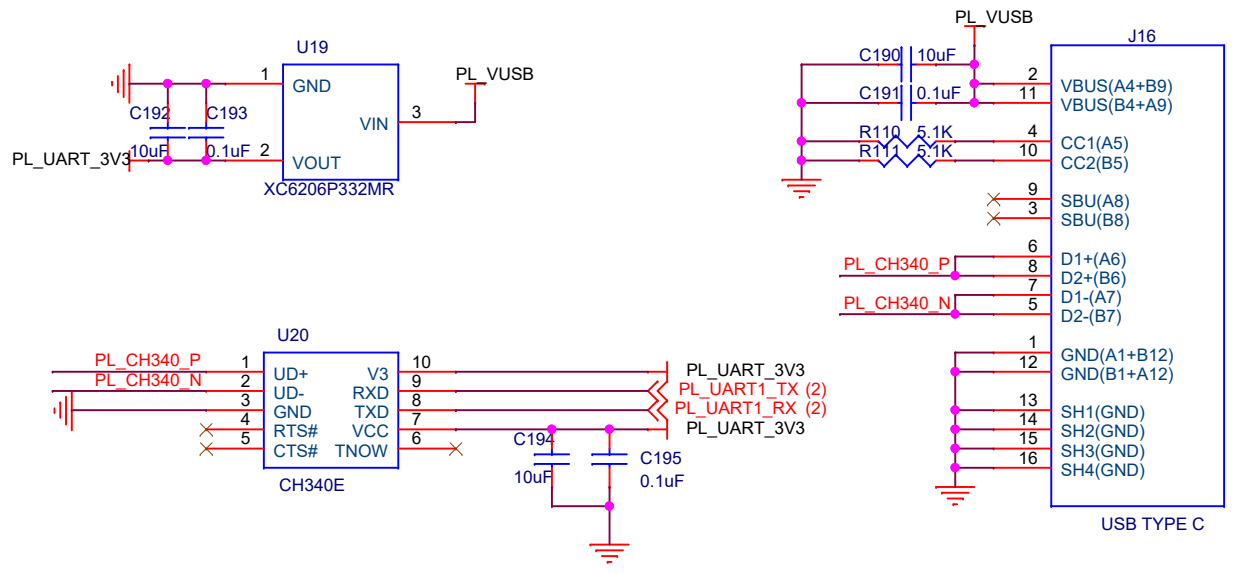
| | |
|--|-------------------------------------|
| Title: BTB MPSOC P5 BASE 1V0 USER 0918 | |
| Author: ALIENTEK | Date: Wednesday, September 18, 2024 |
| Version: V1.4 | File: 15 SFP |
| Size: A4 | Sheet 15 of 21 |



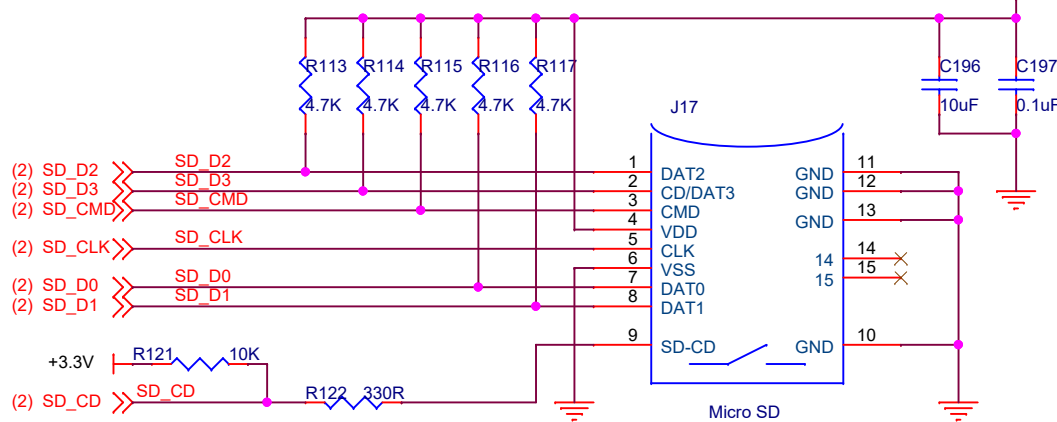
PS_UART



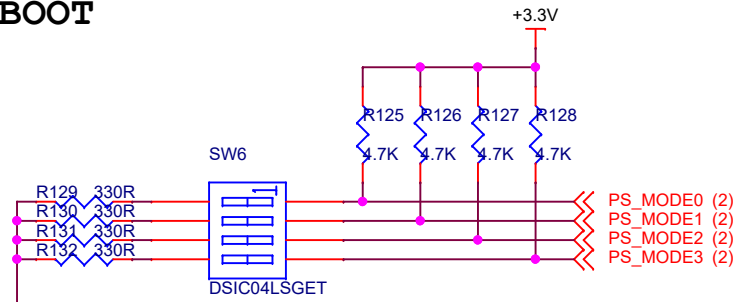
PL_UART



SD Card

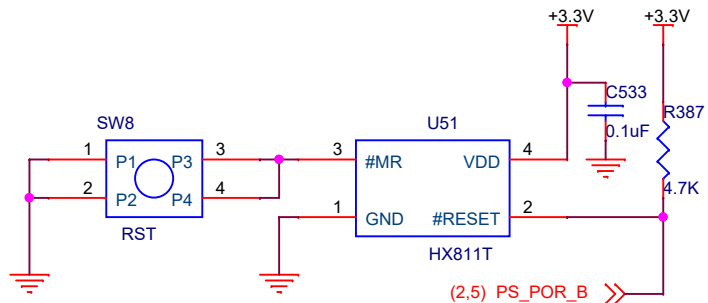


BOOT

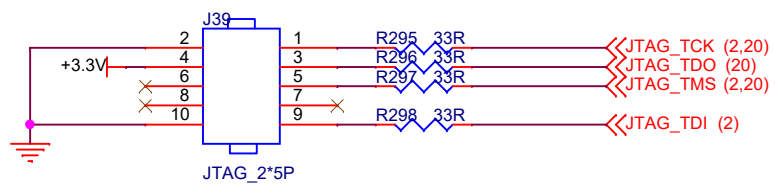


| MODE(3:0) | BOOT MODE | Description |
|-----------|---------------|---------------------------|
| 0000 | PS JTAG | PS JTAG Interface |
| 0001 | Quad SPI(24B) | 24-Bit addressing(QSPI24) |
| 0010 | Quad SPI(32B) | 32-Bit addressing(QSPI32) |
| 0011 | SD0(2.0) | SD0(2.0) |
| 0101 | SD1(2.0) | SD1(2.0) |
| 0110 | EMMC(1.8V) | EMMC version 4.5 at 1.8V |
| 0111 | USB(2.0) | USB 2.0 only |
| 1110 | SD1 LS(3.0) | SD 3.0 |

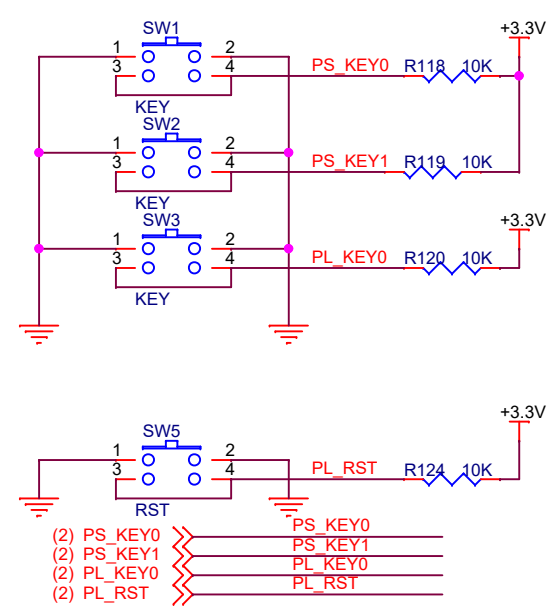
PS_RST



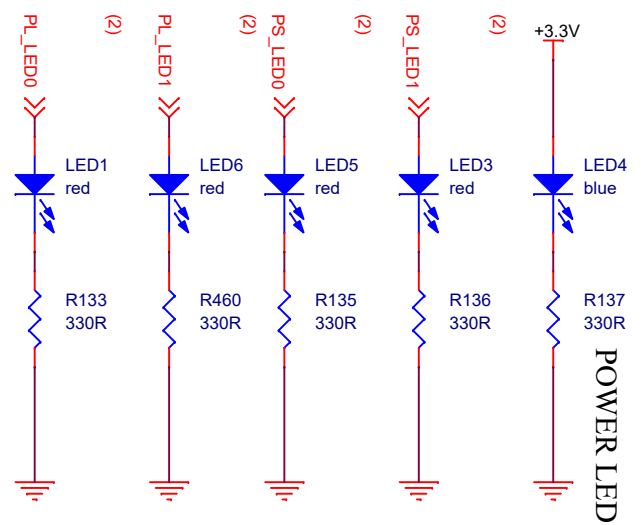
JTAG



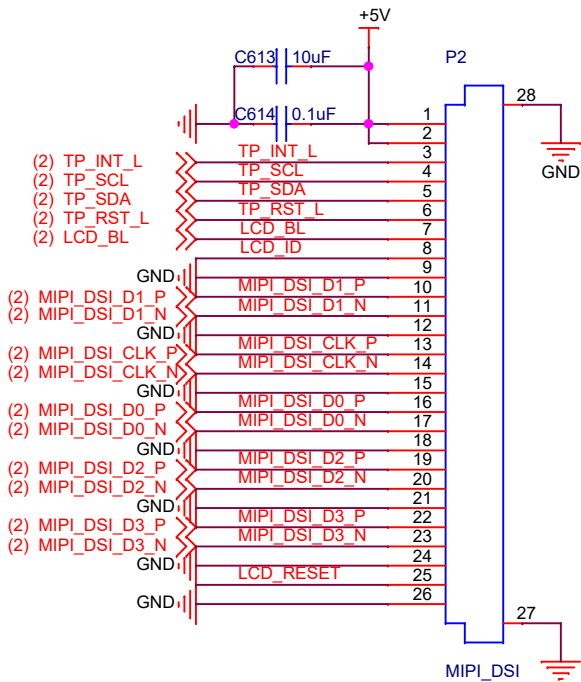
KEY



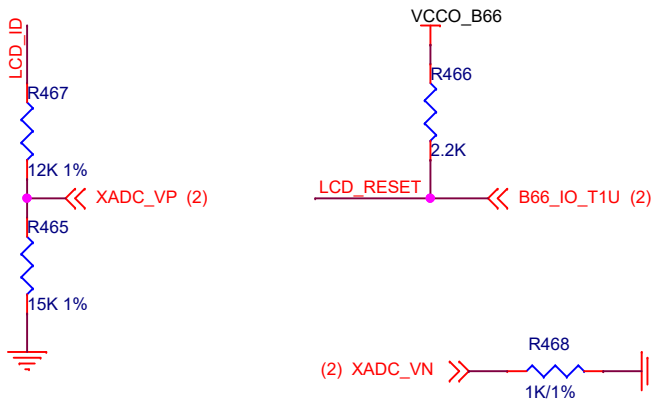
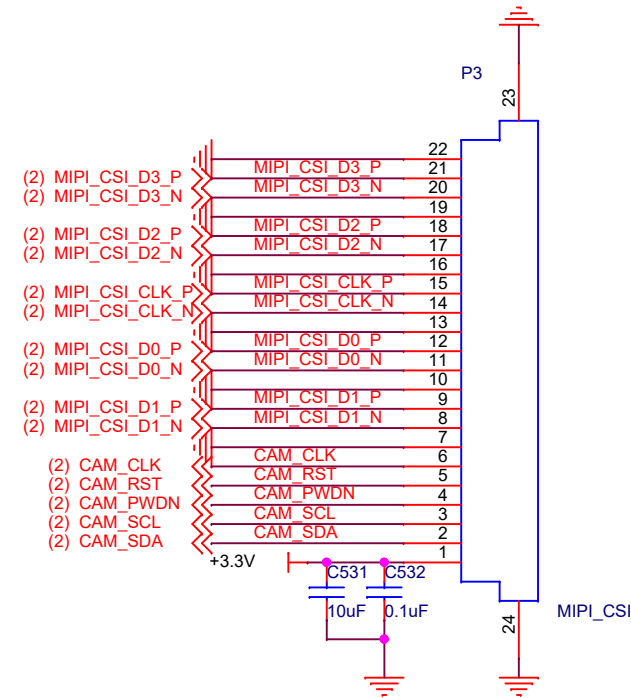
LED



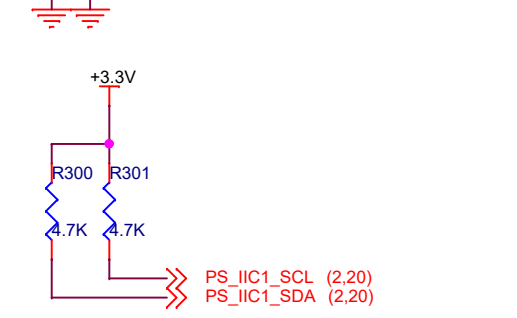
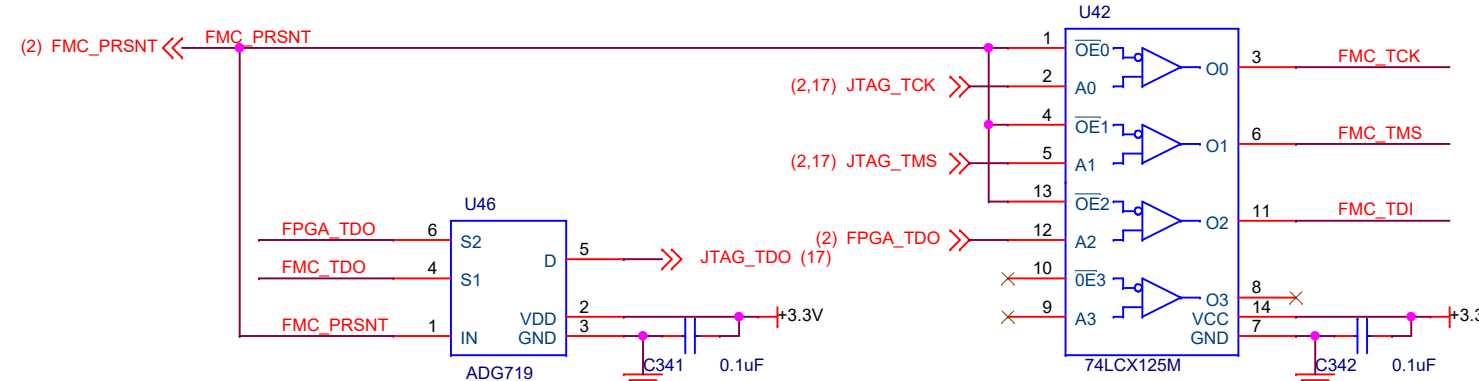
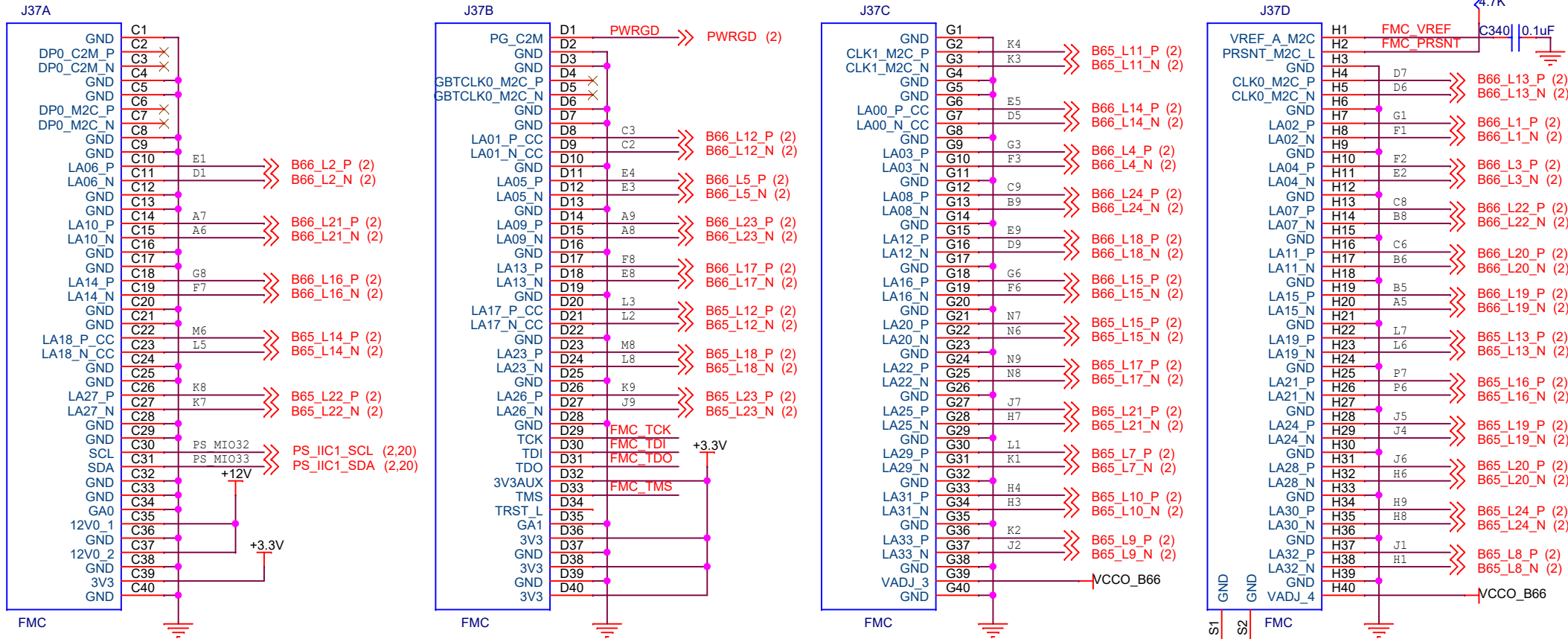
MIPI_DSI

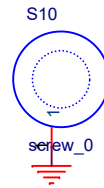
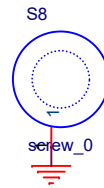
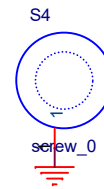
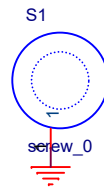
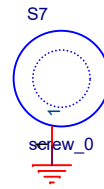
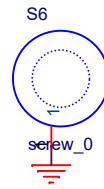
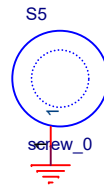


MIPI_CSI



FMC





| | |
|--|-------------------------------------|
| Title: BTB MPSOC P5 BASE 1V0 USER 0918 | |
| Author: ALIENTEK | Date: Wednesday, September 18, 2024 |
| Version: V1.4 | File: 21 MTG |
| Size: A4 | Sheet 21 of 21 |

